

TABLE 1			
PART NUMBER	GEAR RATIO	RATED TORQUE (N-M)	MAX TORQUE (N-M)
CVL90-L1-3	3:1	96	192
CVL90-L1-5	5:1	122	244
CVL-90-L1-10	10:1	56	112

- NOTES:**
1. MAX RPM @ RATED TORQUE: 6000 RPM
 2. RATED RPM @ RATED TORQUE: 3500 RPM
 3. BACKLASH: 8 ARCMIN
 4. FULL LOAD EFFICIENCY: 95%
 5. NOISE: 60 dB
 6. OPERATING TEMP: 14F TO 194F
 7. RATED TORQUE: SHOWN PER TABLE 1
 8. MAX TORQUE: SHOWN PER TABLE 1

D

D

C

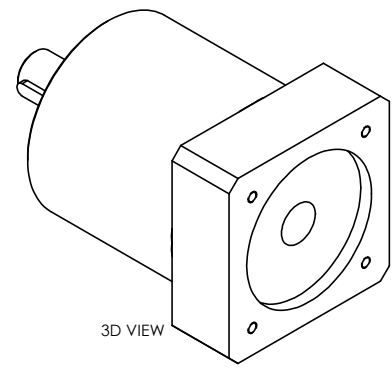
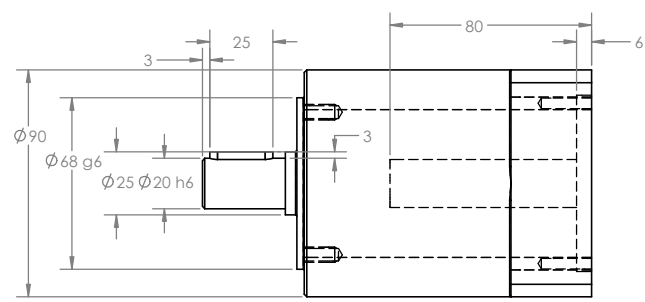
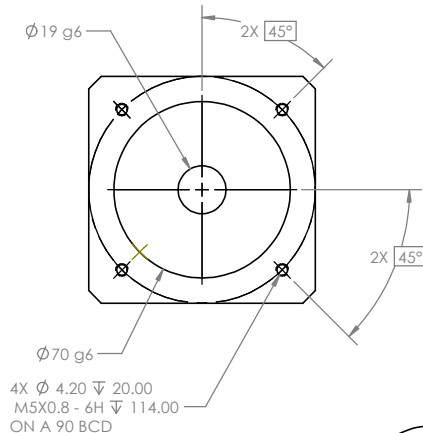
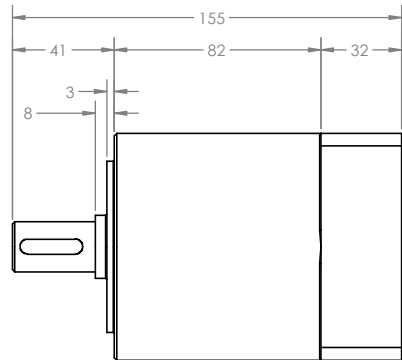
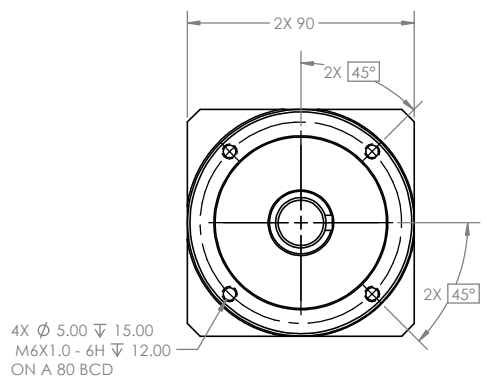
C

B

B

A

A



DWG. NO.: CRL90-L1 B

CRL90-L1	/ 01
PART NUMBER / REV	
UNLESS OTHERWISE SPECIFIED: DIMENSIONS ARE IN METRIC TOLERANCES: XXX.XX ± 0.04 XXX.X ± 0.05 XXX ± 0.10 DO NOT SCALE DRAWING. DIMENSIONING AND TOLERANCING IN ACCORDANCE WITH ASME Y14.5 2009.	

PROPRIETARY AND CONFIDENTIAL
THIS DATA IS OF CONFIDENTIAL AND PROPRIETARY NATURE AND IS PROPERTY OF COVALDO INDUSTRIES LLC AND SHALL NOT BE REPRODUCED IN ANY MANNER NOR DISCLOSED TO OTHERS OR USED FOR ANY PURPOSE WHATSOEVER, EXCEPT BY WRITTEN PERMISSION FROM COVALDO INDUSTRIES LLC.

HARD COPIES ARE TO BE CONSIDERED UNCONTROLLED
ODD DASH NUMBERS SHOWN NEXT HIGHER
CONSECUTIVE EVEN DASH NUMBERS OPPOSITE

3D ANGLE PROJECTION

1959 N. Peace Have Rd. Winston-Salem, NC 27106	
TITLE: PLANETARY GBX	
SIZE C	DWG. NO. CRL90-L1
SCALE: 1:1	WEIGHT: SHEET 1 OF 1
REV 01	