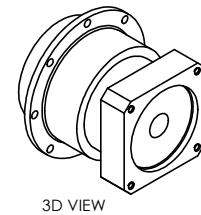
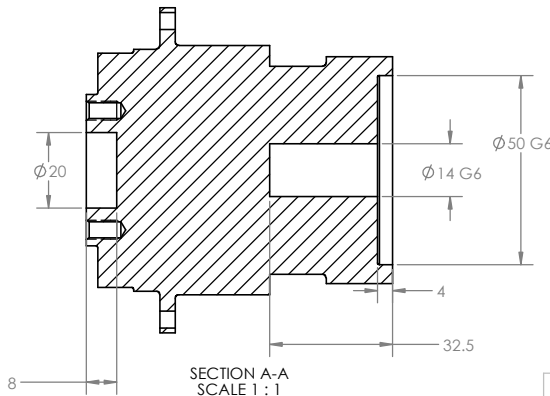
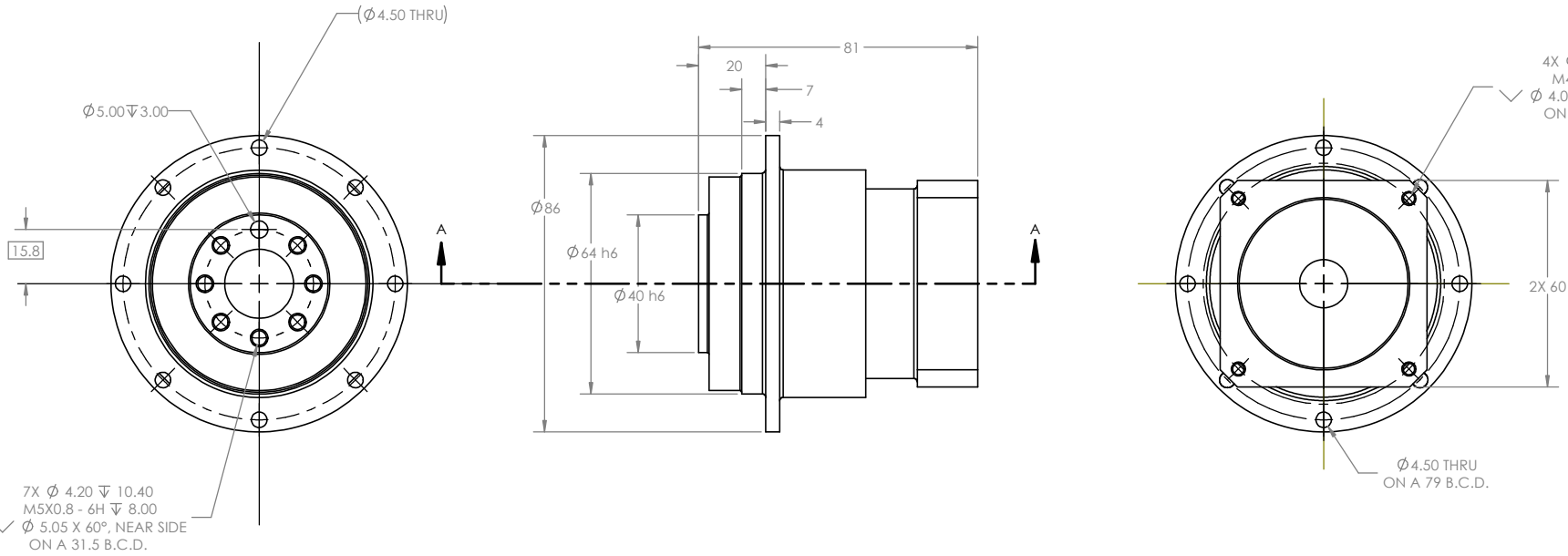


TABLE 1			
PART NUMBER	GEAR RATIO	RATED TORQUE (N-M)	MAX TORQUE (N-M)
CG64-L1-4	4:1	40	60
CG64-L1-7	7:1	40	60
CG64-L1-10	10:1	18	27

- NOTES:**
1. MAX RPM @ RATED TORQUE: 6000 RPM
  2. RATED RPM @ RATED TORQUE: 3300 - 5500 RPM
  3. BACKLASH: 3 ARC/MIN
  4. FULL LOAD EFFICIENCY: 95%
  5. NOISE: 58 dB
  6. OPERATING TEMP: 14F TO 194F
  7. RATED TORQUE: SHOWN PER TABLE 1
  8. MAX TORQUE: SHOWN PER TABLE 1



3D VIEW

CG64 - L1	/ 01
PART NUMBER / REV	
UNLESS OTHERWISE SPECIFIED: DIMENSIONS ARE IN METRIC TOLERANCES: HOLE 2.54 SHAFT 2.0 OTHER 1.0 ...DO NOT SCALE DRAWING.	
DIMENSIONING AND TOLERANCING IN ACCORDANCE WITH ASME Y14.5 2009.	

**PROPRIETARY AND CONFIDENTIAL**  
THIS DATA IS OF CONFIDENTIAL AND PROPRIETARY NATURE AND IS PROPERTY OF COVALDO INDUSTRIES LLC AND SHALL NOT BE REPRODUCED IN ANY MANNER NOR DISCLOSED TO OTHERS OR USED FOR ANY PURPOSE WHATSOEVER, EXCEPT BY WRITTEN PERMISSION FROM COVALDO INDUSTRIES LLC.

HARD COPIES ARE TO BE CONSIDERED UNCONTROLLED  
ODD DASH NUMBERS SHOWN NEXT HIGHER  
CONSECUTIVE EVEN DASH NUMBERS OPPOSITE

3D ANGLE PROJECTION

1959 N. Peace Have Rd. Winston-Salem, NC 27106	
TITLE: <b>HIGH TORQUE GBX</b>	
SIZE <b>C</b>	DWG. NO. <b>CG64 - L1</b>
SCALE: 1:2	REV 01
WEIGHT:	SHEET 1 OF 1