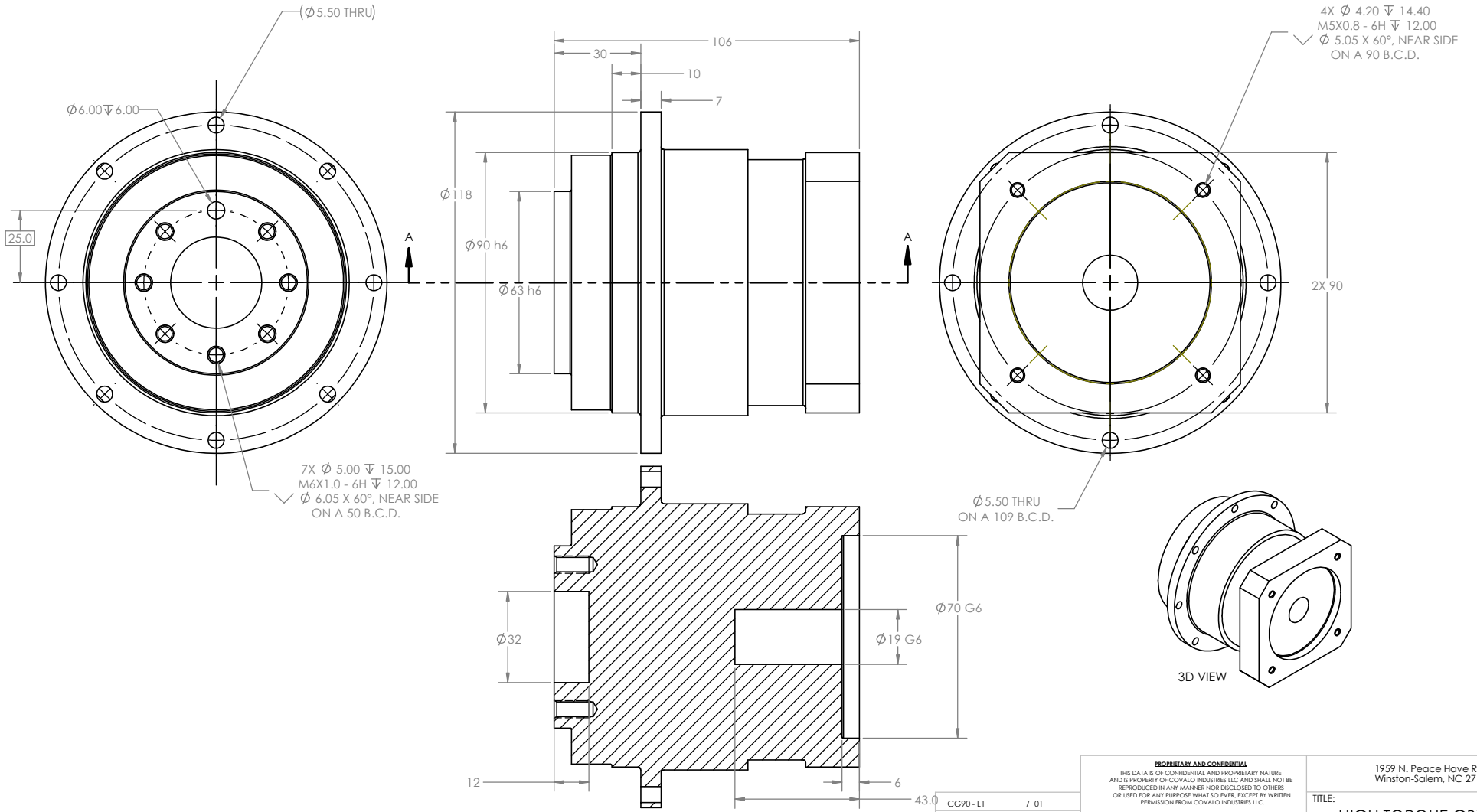


TABLE 1			
PART NUMBER	GEAR RATIO	RATED TORQUE (N-M)	MAX TORQUE (N-M)
CG90-L1-4	4:1	110	165
CG90-L1-7	7:1	90	135
CG90-L1-10	10:1	60	90

- NOTES:**
- MAX RPM @ RATED TORQUE: 6000 RPM
  - RATED RPM @ RATED TORQUE: 2600 - 4500 RPM
  - BACKLASH: 3 ARC/MIN
  - FULL LOAD EFFICIENCY: 95%
  - NOISE: 58 dB
  - OPERATING TEMP: 14F TO 194F
  - RATED TORQUE: SHOWN PER TABLE 1
  - MAX TORQUE: SHOWN PER TABLE 1



4X  $\phi 4.20 \nabla 14.40$   
M5X0.8 - 6H  $\nabla 12.00$   
 $\phi 5.05 \times 60^\circ$ , NEAR SIDE  
ON A 90 B.C.D.

$\phi 5.50$  THRU  
ON A 109 B.C.D.

CG90 - L1 / 01		1959 N. Peace Have Rd. Winston-Salem, NC 27106	
PART NUMBER / REV		TITLE: <b>HIGH TORQUE GBX</b>	
UNLESS OTHERWISE SPECIFIED: DIMENSIONS ARE IN METRIC TOLERANCES: # 2.54 # 2.54 XXX 100 ... DO NOT SCALE DRAWING.		HARD COPIES ARE TO BE CONSIDERED UNCONTROLLED ODD DASH NUMBERS SHOWN NEXT HIGHER CONSECUTIVE EVEN DASH NUMBERS OPPOSITE	
DIMENSIONING AND TOLERANCING IN ACCORDANCE WITH ASME Y14.5 2009.		3D ANGLE PROJECTION	
DWN BY/DATE: COVALD INDUSTRIES / 9/20/2024	APPR BY/DATE: ALEXANDER FRAZIER / 9/20/2024	SIZE <b>C</b>	DRWG. NO. <b>CG90 - L1</b>
SCALE: 1:2		WEIGHT:	REV 01
		SHEET 1 OF 1	

DWG. NO.: CG90 - L1-B