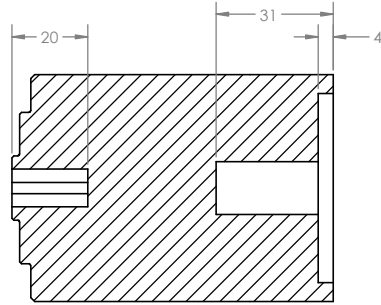
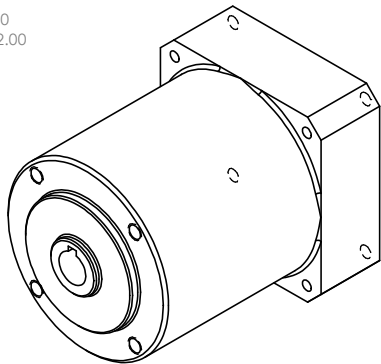
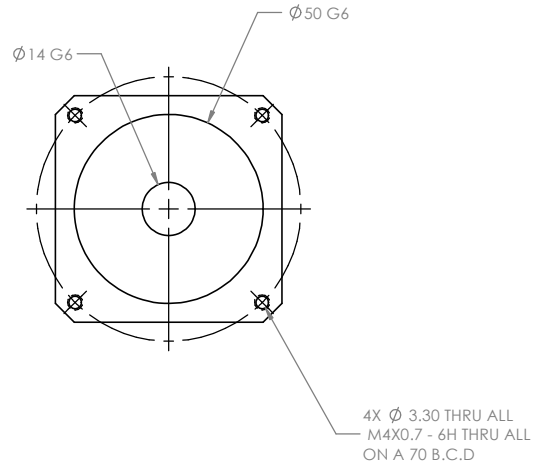
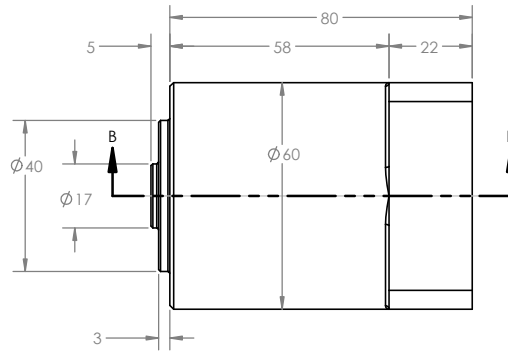
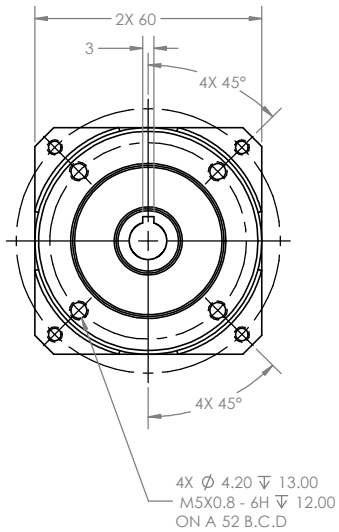


TABLE 1			
PART NUMBER	GEAR RATIO	RATED TORQUE (N-M)	MAX TORQUE (N-M)
CRN60-L1-3	3:1	27	54
CRN60-L1-5	5:1	40	80
CRN-60-L1-10	10:1	16	32

- NOTES:**
1. MAX RPM @ RATED TORQUE: 8000 RPM
  2. RATED RPM @ RATED TORQUE: 4000 RPM
  3. BACKLASH: 8 ARCMIN
  4. FULL LOAD EFFICIENCY: 95%
  5. NOISE: 58 dB
  6. OPERATING TEMP: 14F TO 194F
  7. RATED TORQUE: SHOWN PER TABLE 1
  8. MAX TORQUE: SHOWN PER TABLE 1



SECTION B-B



CRN60-L1	/ 01
PART NUMBER / REV	

UNLESS OTHERWISE SPECIFIED:  
 DIMENSIONS ARE IN METRIC  
 TOLERANCES:  
 .3 .24 ANGLE 1/2 DEG  
 .3 .24 .100  
 .3 .24 .100  
 ... DO NOT SCALE DRAWING.  
 DIMENSIONING AND TOLERANCING IN ACCORDANCE WITH ASME Y14.5 2009.

**PROPRIETARY AND CONFIDENTIAL**  
 THIS DATA IS OF CONFIDENTIAL AND PROPRIETARY NATURE AND IS PROPERTY OF COVALDO INDUSTRIES LLC AND SHALL NOT BE REPRODUCED IN ANY MANNER NOR DISCLOSED TO OTHERS OR USED FOR ANY PURPOSE WHATSOEVER, EXCEPT BY WRITTEN PERMISSION FROM COVALDO INDUSTRIES LLC.  
 HARD COPIES ARE TO BE CONSIDERED UNCONTROLLED  
 ODD DASH NUMBERS SHOWN NEXT HIGHER CONSECUTIVE EVEN DASH NUMBERS OPPOSITE  
 3D ANGLE PROJECTION

1959 N. Peace Have Rd. Winston-Salem, NC 27106	
TITLE: <b>SHAFTLESS, PLANETARY</b>	
SIZE <b>C</b>	DWG. NO. <b>CRN60-L1</b>
SCALE: 1:1	REV 01
WEIGHT:	SHEET 1 OF 1